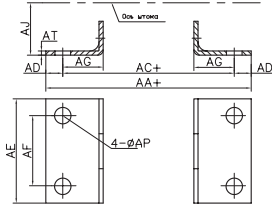
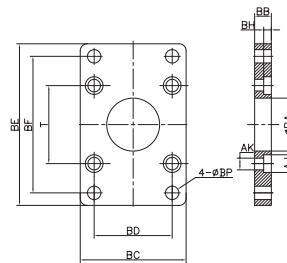


## Лапы



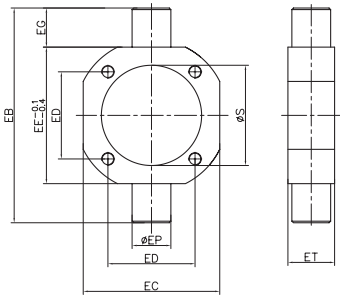
символ/диаметр	32	40	50	63	80	100	125	160	200
AA	153	169	173	184	200	210	249	328	380
AC	134	140	149	158	168	174	213	288	320
AD	9.5	14.5	12	12	16	18	18	20	20
AE	50	57	68	80	97	112	140	180	220
AF	33	36	47	56	70	84	90	115	135
AG	20.5	23.5	28	31	30	30	45	60	70
AJ	28	30	36.5	41	49	57	90	115	135
AP	9	12	12	12	14	14	1	18	22
AT	3.2	3.2	3.2	3.2	4	4	8	8	10

## Фланец



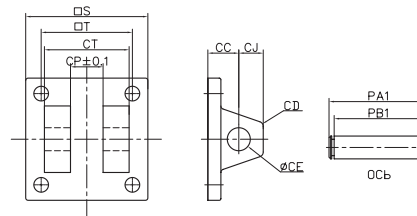
символ/диаметр	32	40	50	63	80	100	125	160	200
BA	28.3	32.3	38.3	38.3	47.3	47.3	56	63	81
BB	10	10	10	12	16	16	20	25	25
BC	47	52	65	76	95	115	140	180	220
BD	33	36	47	56	70	84	90	115	135
BE	72	84	104	11	143	162	224	280	320
BF	58	70	86	98	119	138	180	230	270
BH	6.5	6.5	6.5	8.5	10.5	10.5	15	20	20
AJ	10.5	10.5	10.5	13.5	16.6	16.6	19	25	25
AK	6.5	6.5	6.5	8.5	10.5	10.5	12.5	16.5	16.5
BP	7	7	9	9	12	12	16	18	22
T	33	37	47	56	70	84	110	140	175

## Цапфа



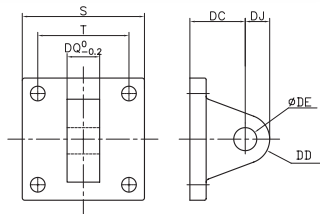
символ/диаметр	40	50	63	80	100	125	160	200
EB	113	126	138	164	182	210	264	336
EC	63	76	88	114	12	160	200	245
ED	37	47	56	70	84	110	140	175
EE	63	76	88	114	132	160	200	245
EG	25	25	25	25	25	25	32	35
EP	25	25	25	25	25	30	32	32
ET	30	30	30	35	40	38	38	52
S	45.5	55.5	68.5	87.5	107.5	134.5	172.5	212.5

## Двойная серьга



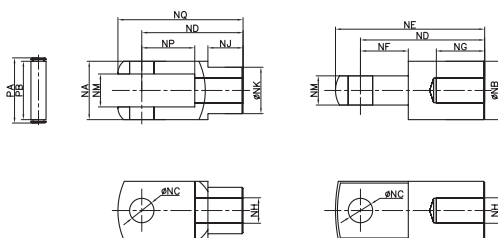
символ/диаметр	32	40	50	63	80	100	125	160	200
CS	19	19	19	19	32	32	50	55	60
CD	5	5	3	3	8	8	25	30	30
CE	12	14	14	14	20	20	25	30	30
CJ	13	13	15	15	21	21	25	30	30
CP	16.3	20.5	20.3	20.3	32.3	32.3	70	90	90
CT	32	44	52	52	64	64	120	160	160
PAI	41	51.8	60.3	60.3	73.8	73.8	130	170	170
PBI	33.5	45.8	54	54	65.5	65.5	121.5	161.5	161.5
S	48	50	62	75	94	112	140	180	220
T	33	37	47	56	70	84	110	140	175

## Серьга



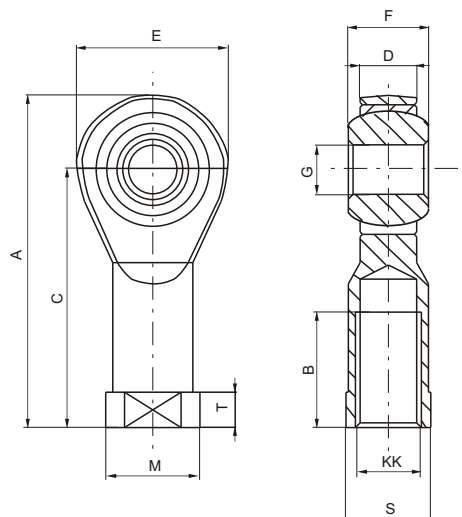
символ/диаметр	32	40	50	63	80	100	125	160	200
S	48	50	62	75	94	112	140	180	220
T	33	37	47	56	70	84	110	140	175
DC	34	34	34	34	48	48	50	55	60
DD	14	14	15	15	20	20	25	30	30
DE	12	14	14	14	20	20	25	30	30
DJ	14	14	15	15	20	20	25	30	30
DQ	16	20	20	20	32	32	70	90	90

## Наконечники (для AF, BF, CF)



диаметр/символ	NA	NB	NC	ND	NE	NF	NG	NH	NJ	NK	NM	NP	NQ	PA	PB
32	19	20	10	40	52	15	20	M10x1.25	12	18	10	20	52	26.2	20
40	25.4	24	12	48	67	24	20	M12x1.25	20	23	12	24	62	32.8	26
50	32	32	16	64	89	32	23	M16x1.5	22	30	16	32	83	39.3	33
63	32	32	16	64	89	32	23	M16x1.5	22	30	16	32	83	39.3	33
80	44.4	40	20	80	112	40	30	M20x1.5	30	39	20	40	105	53.3	45
100	44.4	40	20	80	112	40	30	M20x1.5	30	39	20	40	105	53.3	45
125	62.4	50	20	100	120	52	40	M27x2	26	38	20	70	118	75	66
160	78.4	62	30	125	154	45	50	M36x2	40	52	40	85	153	96	82
200	78.4	62	30	125	154	45	50	M36x2	40	52	40	85	153	96	82

## Наконечник штока со сферическим шарниром



Диаметр	32	40	50	63	80	100	125	160	200
A	57	66	85	85	102	102	145	165	165
B	20	22	28	28	33	33	51	56	56
C	43	50	64	64	77	77	110	125	125
D (-0,1)	10,5	12	15	15	18	18	25	28	28
E	28	32	42	42	50	50	70	80	80
F	14	16	21	21	25	25	37	43	43
G (H7)	10	12	16	16	20	20	30	35	35
KK	M10x1,25	M12x1,25	M16x1,5	M16x1,5	M20x1,5	M20x1,5	M27x2	M36x2	M36x2
M	19	22	27	27	34	34	50	58	58
S	17	19	22	22	30	30	41	50	50
T	6,5	6,5	8	8	10	10	15	17	17
Масса, г	76	110	220	220	410	410	1200	1600	1600