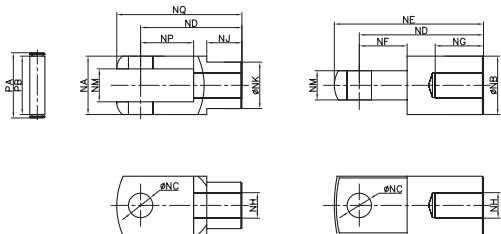


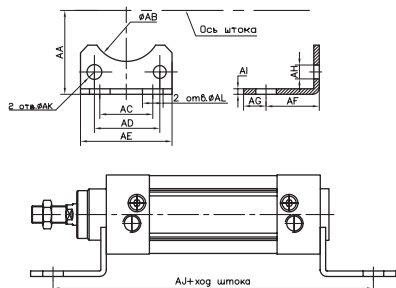
Крепеж для цилиндров CF

Наконечники (для AF, BF, CF)



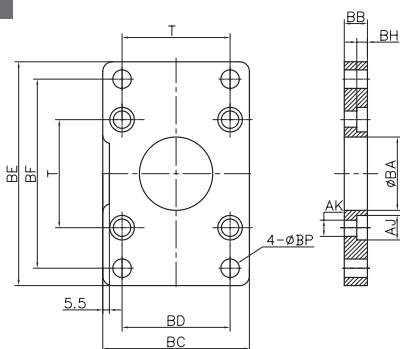
диаметр/ символ	NA	NB	NC	ND	NE	NF	NG	NH	NJ	NK	NM	NP	NQ	PA	PB
32	19	20	10	40	52	15	20	M10x1.25	12	18	10	20	52	26.2	20
40	25.4	24	12	48	67	24	20	M12x1.25	20	23	12	24	62	32.8	26
50	32	32	16	64	89	32	23	M16x1.5	22	30	16	32	83	39.3	33
63	32	32	16	64	89	32	23	M16x1.5	22	30	16	32	83	39.3	33
80	44.4	40	20	80	112	40	30	M20x1.5	30	39	20	40	105	53.3	45
100	44.4	40	20	80	112	40	30	M20x1.5	30	39	20	40	105	53.3	45
125	62.4	50	20	100	120	52	40	M27x2	26	38	20	70	118	75	66

Лапы



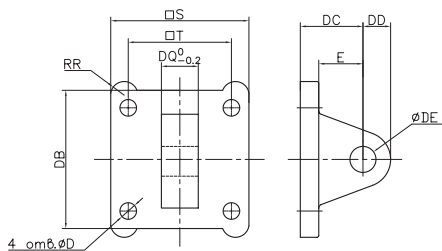
диаметр/ символ	32	40	50	63	80	100
AA	32	36	45	50	63	71
AB(min)	30	35	40	45	45	55
AC	32	38	46	56	72	89
AD	32.5	38	46.5	56.5	72	89
AE	45	52	65	76	94	112
AF	24	28	32	31.5	41.5	41.5
AG	9	11	11	11	14	16
AH	15.8	17	21.8	21.8	27	26.5
AI	3.2	3.2	3.2	3.2	4	4
AJ	142	161	170	185	210	220
AK	6.5	6.5	8.5	8.5	10.5	10.5
AL	7	9	9	9	12	14

Фланец



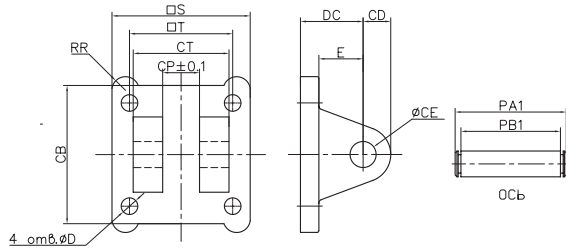
диаметр/ символ	32	40	50	63	80	100
BA	30.3	35.3	40.3	45.3	45.3	55.3
BB	10	10	12	12	16	16
BC	45	52	65	76	94	112
BD	32	36	45	50	63	75
BE	80	90	110	120	150	175
BF	64	72	90	100	126	150
BH	6.5	6.5	8.5	8.5	10.5	10.5
AJ	10.5	10.5	13.5	13.5	16.5	16.5
AK	6.5	6.5	8.5	8.5	10.5	10.5
BP	7	9	9	9	12	14
T	32.5	38	46.5	56.5	72	89

Серьга



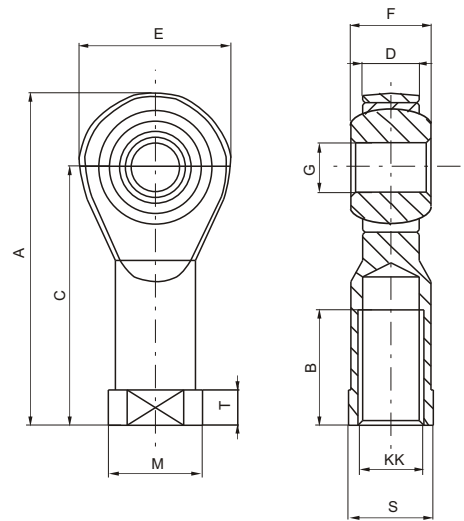
диаметр/ символ	32	40	50	63	80	100
BA	30.3	35.3	40.3	45.3	45.3	55.3
BB	10	10	12	12	16	16
BC	45	52	65	76	94	112
BD	32	36	45	50	63	75
BE	80	90	110	120	150	175
BF	64	72	90	100	126	150
BH	6.5	6.5	8.5	8.5	10.5	10.5
AJ	10.5	10.5	13.5	13.5	16.5	16.5
AK	6.5	6.5	8.5	8.5	10.5	10.5
BP	7	9	9	9	12	14
T	32.5	38	46.5	56.5	72	89

Двойная серьга



диаметр/ символ	32	40	50	63	80	100
S	45	52	65	76	94	112
T	32.5	38	46.5	56.5	72	89
D	6.5	6.5	8.5	8.5	10.5	10.5
E	14	17	17	22	24	25
RR	6.5	6.5	9	9.5	11	11.5
CB	34	41	54	65	83	101
CC	22	25	27	32	36	41
CD	10	11	13	16	16	20
CE	10	12	12	16	16	20
CP	26	28	32	40	50	60
CT	45	52	60	70	90	110
PA1	53	60	68	78	100	120
PB1	46.5	53.5	61.5	71.5	91.5	111.5

Наконечник штока со сферическим шарниром



Диаметр	32	40	50	63	80	100	125
A	57	66	85	85	102	102	145
B	20	22	28	28	33	33	51
C	43	50	64	64	77	77	110
D (-0,1)	10,5	12	15	15	18	18	25
E	28	32	42	42	50	50	70
F	14	16	21	21	25	25	37
G (H7)	10	12	16	16	20	20	30
KK	M10x1,25	M12x1,25	M16x1,5	M16x1,5	M20x1,5	M20x1,5	M27x2
M	19	22	27	27	34	34	50
S	17	19	22	22	30	30	41
T	6,5	6,5	8	8	10	10	15
Масса, г	76	110	220	220	410	410	1200