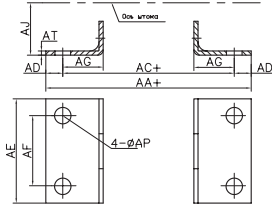
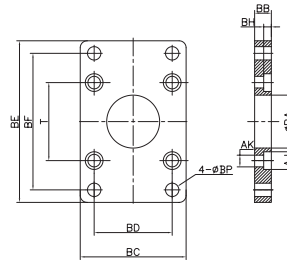


Лапы



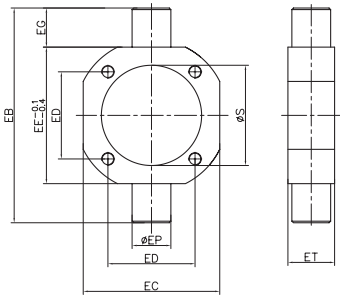
символ/диаметр	32	40	50	63	80	100	125	160	200
AA	146	154	170	176	202	210	290	340	380
AC	128	132	148	148	174	174	250	300	320
AD	9.0	11.0	11	14	14	16	20	20	30
AE	50	55	70	80	100	120	140	180	220
AF	32	38	46	56	72	89	90	115	135
AG	22.0	24.0	27	27	30	32	45	60	70
AJ	30	33	40.0	45	55	65	90	115	135
AP	7	9	9	12	12	14	16	18	22
AT	3.2	3.2	3.2	3.6	4.5	4.5	8	8	9

Фланец



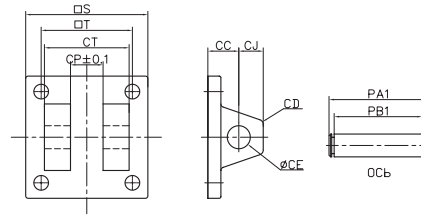
символ/диаметр	32	40	50	63	80	100	125	160	200
AJ	11	11	14	14	17.5	17.5	19	-	-
AK	7	7	7	9	10.5	10.5	13	M16	M16
BA	31	36	41	46	46	56	61	66	76
BB	10	10	12	12	16	16	20	20	25
BC	50	55	70	80	100	120	140	180	220
BD	32	36	45	50	63	75	ПО	140	175
BE	79	90	ПО	120	153	178	224	280	320
BF	64	72	90	100	126	150	180	230	270
BH	6.5	6.5	8.5	8.5	10.5	10.5	12.5	16	16
BP	7	9	9	9	12	12	16	18	22
T	32	38	46	56	72	89	110	140	175

Цапфа



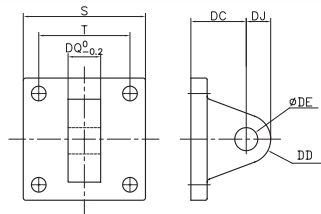
символ/диаметр	32	40	50	63	80	100	125	160	200
EB	74	95	107	130	150	182	210	264	314
EC	49	58	71	87	ПО	136	163	200	250
ED	32	38	46	56	72	89	ПО	140	175
EE	50	63	75	90	ПО	132	160	200	250
EG	12	16	16	20	20	25	25	32	32
EP	12	16	16	20	20	25	25	32	32
ET	17	22	22	28	34	40	45	50	55

Двойная серьга



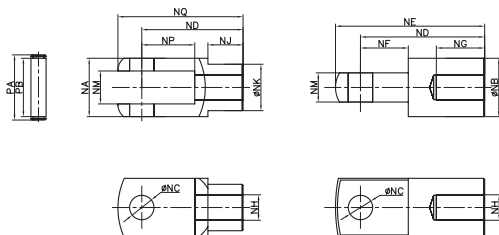
символ/диаметр	32	40	50	63	80	100	125	160	200
CC	23	23	30	30	42	42	50	55	60
CD	10	11	15	15	23	23	8	9	9
CE	10	11	14	14	22	22	25	30	30
CJ	13	13	17	17	26	26	31	35.5	36
CP	14	14	20	20	30	30	70	90	90
CT	28	28	40	40	60	60	130	170	170
PB1	29	29	41	41	61	61	139	181	181
PA1	35	36	48	48	69	69	131.5	171.5	171.5
S	46	52	65	75	95	114	140	180	220
T	32	38	46	56	72	89	110	140	175

Серьга



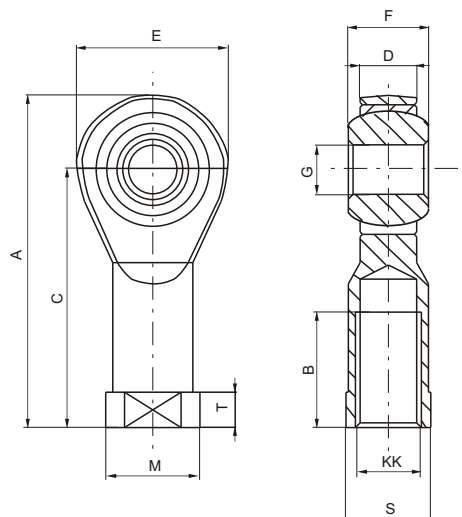
символ/диаметр	32	40	50	63	80	100	125	160	200
S	46	52	65	75	95	114	140	180	220
T	32	38	46	56	72	89	110	140	175
DC	23	23	30	30	42	42	50	55	60
DD	10	11	15	15	23	23	25	30	30
DE	10	10	14	14	22	22	25	30	30
DJ	13	13	17	17	26	26	33	35.5	37
DQ	14	14	20	20	30	30	69.7	89.7	89.7

Наконечники



Диаметр/символ	NA	NB	NC	ND	NE	NF	NG	NH	NJ	NK	NM	NP	NQ	PA	PB
32	28	20	10	30	40	16	14	M10x1.25	12	20	14	16	42	44	26
40	28	22	10	40	50	19	19	M14x1.5	15	22	14	19	59	44	36
50	40	28	14	50	64	24	24	M18x1.5	18	28	20	24	74	60	51
63	40	28	14	50	64	24	24	M18x1.5	18	28	20	24	74	60	51
80	60	40	22	65	80	34	26	M22x1.5	18	40	30	40	94	82	72
100	60	40	22	65	80	34	26	M26x1.5	18	40	30	40	94	82	72

Наконечник штока со сферическим шарниром



Диаметр	32	40	50	63	80	100	125	160	200
A	57	66	85	85	102	102	145	165	165
B	20	22	28	28	33	33	51	56	56
C	43	50	64	64	77	77	110	125	125
D (-0,1)	10,5	12	15	15	18	18	25	28	28
E	28	32	42	42	50	50	70	80	80
F	14	16	21	21	25	25	37	43	43
G (H7)	10	12	16	16	20	20	30	35	35
KK	M10x1,25	M12x1,25	M16x1,5	M16x1,5	M20x1,5	M20x1,5	M27x2	M36x2	M36x2
M	19	22	27	27	34	34	50	58	58
S	17	19	22	22	30	30	41	50	50
T	6,5	6,5	8	8	10	10	15	17	17
Масса, г	76	110	220	220	410	410	1200	1600	1600